



Cipher X® 7210 Network Security Device



**100 Mb/s Full Duplex
Wire Speed Encryption
Layer 2, 3 & 4
Network Security Device**

The Cipher X 7210 Network Security Device is the 100 Mb/s model of the 10 Gb/s family of TCC Cyber Security Appliances. The Cipher X 7210 is ideally suited for applications with low-bandwidth requirements, such as remote offices. It integrates seamlessly into existing networks without degrading performance. Its hardware-based Layer 2, 3 and 4 encryption engines encrypt and decrypt outbound and inbound traffic at full wire speed. Its powerful Security Policy management sets the criteria for encrypting, blocking or passing traffic through.

Cipher X Network Security Family

The Cipher X 7210 is the 100 Mb/s model of the family of TCC Cyber Security Appliances. Fully interoperable with the Cipher X 7211 and 7220, the Cipher X family offers network security from 100 Mb/s up to 10 Gb/s.

Seamless Network Overlay

The Cipher X 7210 enables data to securely transit networks over fiber, satellite or microwave, including multicast applications such as secure video conferencing.

The wire speed Cipher X 7210 is a tunnel-less, Layer 2, 3 or 4 solution, which overlays on top of existing or new networks — no network architecture changes are required.

Optimum Flexibility

The Cipher X 7210 is highly flexible, supporting a broad array of network security applications. The Security Policy Manager sets the criteria for the treatment of network traffic based on users' operational requirements. Users can define encryption, blocking or plain pass-through treatment of traffic based on VLAN tags; Source & Destination addresses; Protocol and Port numbers.

Scalable Performance

With performance up to 100 Mb/s, the Cipher X 7210 minimizes the entry cost of deploying a security solution, while the Cipher X 7211 (1 Gb/s) and 7220 (10 Gb/s) network security



appliances provide the upgrade path to higher performance.

Cryptographic Strength

The Cipher X 7210 is a FIPS 140-2 Level 2 designed encryption solution with multiple layers of protection. The AES 256-bit algorithm in Galois Counter Mode provides superior-grade encryption and authentication.

A three-tier symmetric key management architecture integrating the Cipher X 7210 and KEYNET Network Security Manager maximizes network security.

The Cipher X 7210's embedded key vault processor securely manages system security parameters, generates local data encryption keys and ensures cryptographic integrity, while KEYNET Network Security Manager provides security configuration and key management.

Benefits

- 100 Mb/s Full Duplex Wire Speed Encryption
- Layer 2, 3 & 4 Network Security Device
- Native AES-256 Symmetric Key Encryption
- Security Policy management criteria for encrypting, decrypting, blocking or passing-through traffic, based on:
 - VLAN tags
 - Source & Destination addresses
 - Protocol and Port numbers
- Multi-layer key and device management
- Cost-effective solution

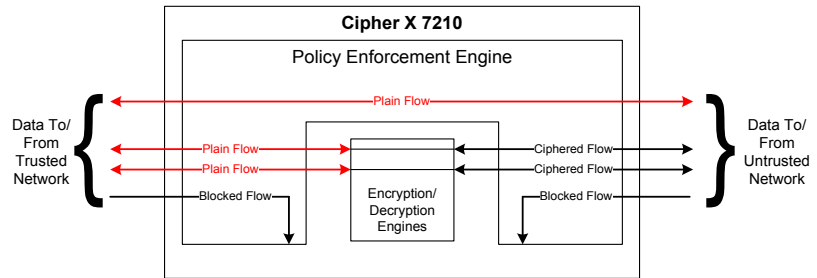


KEYNET Network Security Manager maximizes network security

Cipher X 7210 Network Security Device

Security Policies

CipherONE Security Policy management allows users to set infinite individual Security Policies for the Cipher X 7210 Policy Enforcement Engine to encrypt, block or pass-through traffic, based on the Ethernet Frame and IP Packet headers information, including VLAN tags; Source & Destination addresses; Protocol and Port numbers. Policies can be Point-to-Point, Global, or Single-Ended to easily secure unicast or multicast traffic.



Technical Specifications

Network

- Operates at Layer 2/3/4
- 100 Mb/s wire speed performance
- Seamless integration with Ethernet Networks
- Interoperates with Cipher X 7211 and 7220 encryptors
- Tunnel-less encryption solution
- IPv4/IPv6 capable
- Secures unicast or multicast traffic
- Secures public/private networks using NAT/PAT
- Supports jumbo frames to 9000 bytes
- Basic firewall function (packet filter)
- Helps protect against denial of service attacks

Interfaces

- (2) 10/100/1000 BASE-TX (Red/Black)
- (1) 10/100/1000 BASE-TX (Management)
- Local serial console port
- SmartModule key fill port

Device Management

- Local device control with Command Line Interface
- Centralized management with KEYNET Network Security Manager
- Encrypted, authenticated SNMP management messaging with secure TCC extensions

Data Encryption

AES-256

Key Management

- Symmetric key with three-tier secure key management infrastructure
- Lossless data encryption key change
- SHA-256 integrity and authentication

Environmental

- Operational Temperature 0°C to +50°C @ 1800m and 85% RH
- Storage Temperature -20°C to +70°C
- Humidity: 20% to 85% RH, non-condensing

Prime Power:

100V – 240 VAC, 50 – 60Hz

Mounting/Dimensions

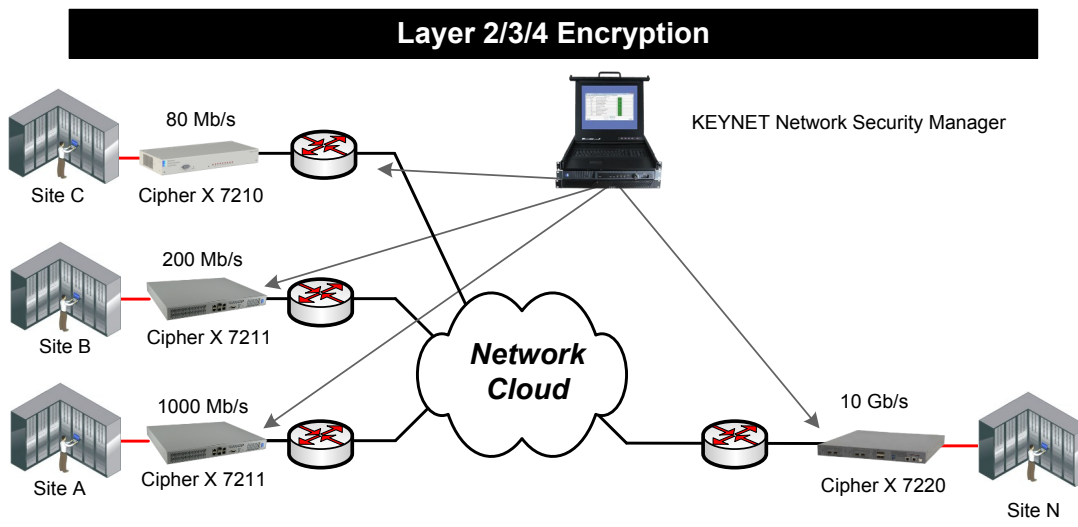
1RU standard 19" rack mountable with removable rack mount ears

Compliance

- Designed to FIPS 140-2, Level 2
- FCC Part 15, Class B
- EN/UL 60950-1
- EN55022, EN55024

Miscellaneous

Access control



For more than 50 years, Technical Communications Corporation has specialized in superior-grade secure communications systems and customized solutions, supporting our CipherONE® best-in-class criteria, to protect highly sensitive voice, data and video transmitted over a wide range of networks. Government entities, military agencies and corporate enterprises in 115 countries have selected TCC's proven security to protect their communications.



TECHNICAL COMMUNICATIONS CORPORATION

100 Domino Drive, Concord, MA 01742 U.S.A.
 +1-978-287-5100, Online request: www.tccsecure.com/sales
 Fax: +1-978-371-1280, Web: www.tccsecure.com

